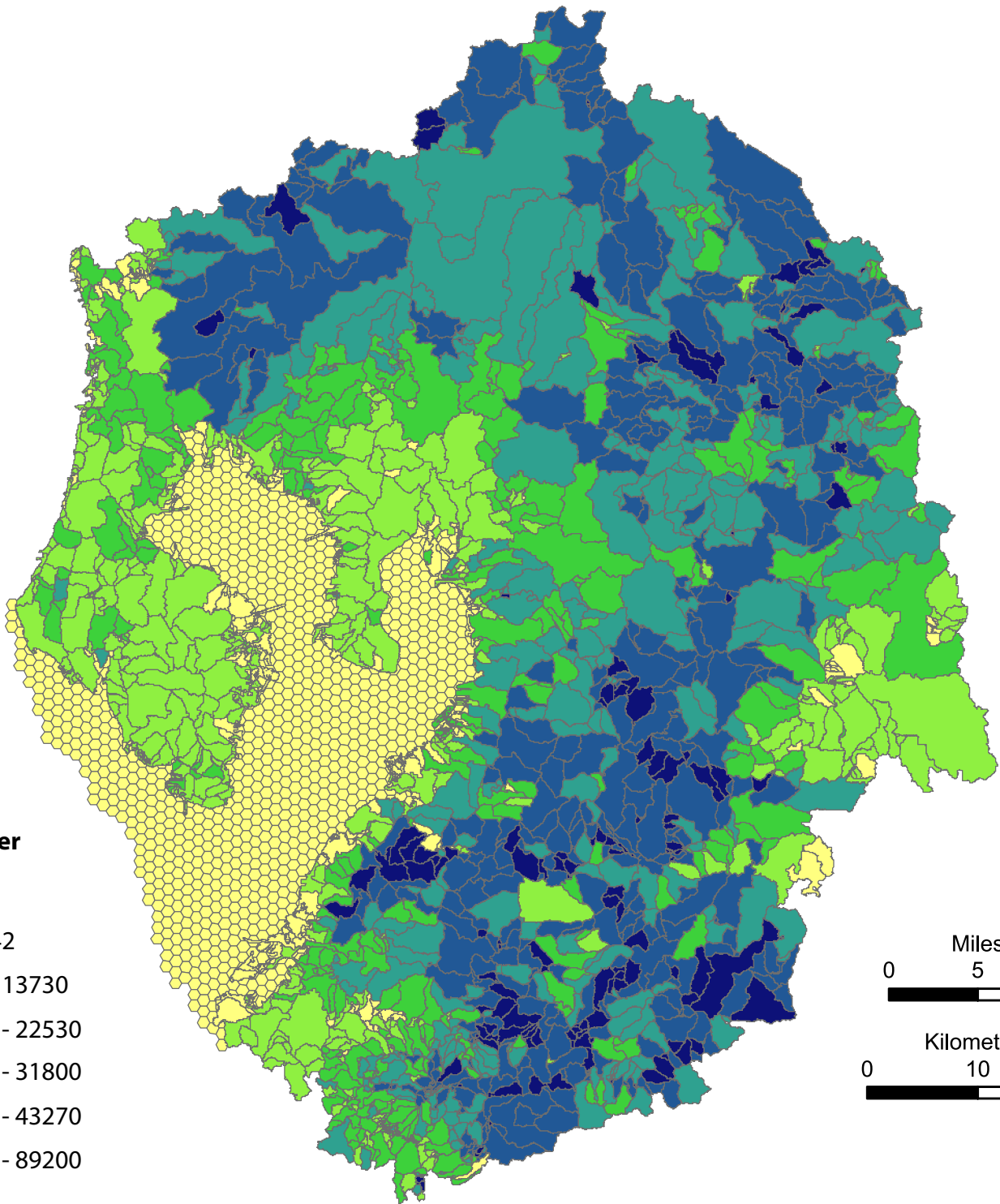


Value of Water Retained

Sea Level Rise Scenario, Development Unprotected 2100

Map Compiled on 4-23-13



Value of Water Retained
[\$/Ha/Yr]

- 0 - 4742
- 4743 - 13730
- 22540 - 22530
- 22540 - 31800
- 31810 - 43270
- 43280 - 89200

